

ITEM	QTY	DESCRIPTION
1	1	E-CLIP
2	1	WASHER
3	1	PACKING
4	1	FLOAT VALVE 2.5
5	1	SPRING
6	1	WASHER
7	1	SCREW, THROTTLE STOP
8	1	GASKET, BOWL
9	1	SPRING
10	1	SCREW, AIR
11	2	CAP
12	1	O-RING
13	4	SCREW, BOWL

MK-VM34-8441

POLARIS APPLICATIONS:

1997-2002 Scrambler 400

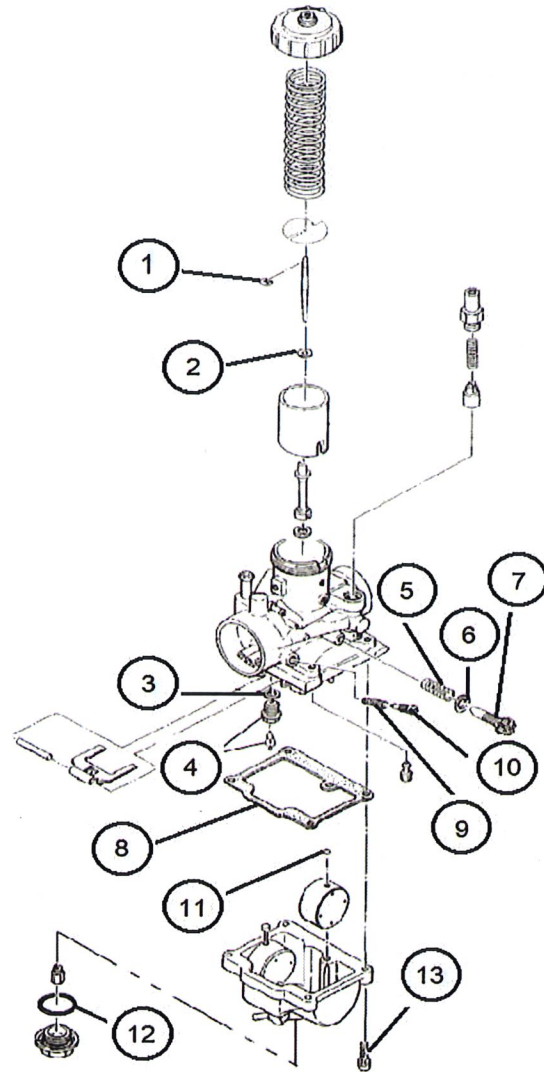
1994-1999 Sport 400L

1995-2001 Xplorer 400L

1997 Big Boss 400L 6X6

1996-1998 Xpress 400L

1994-1997 Sportsman 400L



**REPLACEMENT JET NOTE

Due to varying model requirements, this kit does not include main jets or pilot jets. If needed, refer to the following Mikuni Part numbers when acquiring these jets:

Main Jet: 4/042-XXXX

Pilot Jet: VM22/210-XXXX

REV 11/10

MIKUNI AMERICAN CORPORATION

www.mikunipower.com

HEAD OFFICE: 8910 MIKUNI AVENUE
 NORTHRIDGE, CALIFORNIA 91324-3496
 PHONES: (818) 885-1242
 FAX: (818) 993-7387/8